

# Tree condition survey

at

# Public Gardens, Alton

for

# Alton Town Council

## sapling arboriculture ltd

Ben Abbatt  
Dip. Arb. (RFS), BA (Hons), MICFor, MRICS, CEnv  
Arboricultural Association Registered Consultant



Holbache Mount Pleasant Road, Alton, Hants,  
GU34 2RS

t: 01420 550 160  
e: [enquiries@saplingarboriculture.com](mailto:enquiries@saplingarboriculture.com)  
w: [www.saplingarboriculture.com](http://www.saplingarboriculture.com)

Reference: J064 / 16  
May 2020  
© Sapling Arboriculture Limited 2020



## Contents

Instruction	3
Tree condition survey	4
General notes	17
Key	18
Site plan	19

## **Instruction**

The tree survey is to be carried out in relation to the landowner's duty under the Occupier's Liability Act 1984 and common law. The tree survey will be carried out from ground level, identifying significant tree features that may have significant bearing upon the condition and management of the tree and giving appropriate recommendations and priorities.

Typical significant defects that are to be identified can be referred to in "Hazards from Trees, a general guide" by David Lonsdale and "The body language of trees" by Claus Mattheck published by the Forestry Commission and the Department of the Environment respectively.

## TREE CONDITION SURVEY SHEET

Site Public Gardens, Alton  
 Client Alton Town Council  
 Date 11<sup>th</sup> May 2020  
 Surveyed by Ben Abbatt

TREE NO	SPECIES	AGE CLASS	CONDITION		RECOMMENDATIONS	PRIORITY
1	Yew	Mature	<b>Fair</b>	Lower than normal leaf size and density. Touching / grafted stems at 3m.	Mulch with wood chip to c75mm settled depth to reduce compaction around base of tree to 3m radius to improve growing conditions.	Low
2	Wellingtonia	Mature	<b>Good</b>	Top lost with 3 subsidiary stems from c13m. Tree grows slightly towards North East. Some minor deadwood and small hanging branches in upper crown. Mechanical damage at base.	Cut turf and remove within 0.5m radius of tree base to depth of 50mm and replace with wood chip to settled depth of 75mm.  Reduce branch overhanging the car parking area to a radial length of 6m.	Low  Low
3	Holly	Mature	<b>Fair</b>	Suppressed canopy. Two stems from 300mm, minor inclusion.	No works required at time of survey.	-
119	Chamaecyparis x 2	Middle aged	<b>Fair</b>	Suppressed canopy over adjacent car park.	Remove to allow adjacent trees to develop.	Low
4	Yew	Mature	<b>Fair</b>	Suppressed canopy. Two stems from 2.5m, good union. Grows to East, out from under crown of T5. Low branches over car park.	Crown lift to 3m all round.  Crown lift to 4m over car parking spaces.	Low  Low
5	Lime	Mature	<b>Good</b>	Typical minor (less than 25mm diameter) and occasional moderate deadwood (25 – 100mm diameter) throughout. Crown grows low over parking area. Single straight upright stem ivy to 8m and epicormic growth. Stored soil at base of tree.	Remove deadwood more than 25mm diameter.  Crown lift to 5m all round.  Remove epicormic growth twice a year from base to 3m to allow surveys.	Low  Low  Low
6	Lawson cypress	Young	<b>Good</b>	Suppressed canopy. Single straight stem. Stands under crown of T5.	Crown lift to 3m all round.	Low

TREE NO	SPECIES	AGE CLASS	CONDITION		RECOMMENDATIONS	PRIORITY
7	Hawthorn	Mature	<b>Fair</b>	Suppressed canopy. Stands under crown of T5.	Crown lift to 3m all round.	Low
8	Holly	Mature	<b>Fair</b>	Suppressed canopy.	No works required at the time of the survey.	Low
9	Leyland cypress	Young	<b>Good</b>	Suppressed canopy. Stands under and growing up into crown of T10.	Crown lift to 3m all round.	Low
10	Lime	Mature	<b>Fair</b>	Intermediate canopy. Typical occasional moderate deadwood (25 - 100mm diameter). Crown grows low over parking area. Series of branch reductions on branches in low canopy with mature regrowth. Two large stems from 3m, fork union not visible from ground. Epicormic growth and ivy on stem impeding survey.	Remove deadwood >25mm diameter from crown.  Remove epicormic growth from base to 3m twice a year to allow survey.  Crown lift to 5m.	Low  Low  Low
11	Juniper	Mature	<b>Fair</b>	Suppressed canopy. Good vitality shown by normal twig and leaf size, structure, colour and density. Significant lean / growing South. Old pruning wound at base on South West side, now a cavity with decay.	No works required at time of survey.	-
12	Yew	Middle aged	<b>Good</b>	Suppressed canopy. Good vitality shown by normal twig and leaf size, structure, colour and density.	No works required at time of survey.	-
13	Poplar	Mature	<b>Good</b>	Intermediate canopy. Good vitality shown by normal twig and leaf size, structure, colour and density. Some small epicormic growth low down on stem. Large surface root with mower damage evident.	Crown lift to 4m all round.  Remove deadwood more than 25mm diameter.	Low  Low

TREE NO	SPECIES	AGE CLASS	CONDITION		RECOMMENDATIONS	PRIORITY
14	Ligustrum	Mature	<b>Fair</b>	Suppressed canopy. Two stems from c0.5m, fair union. Wound at base on North side.	Cut turf and remove within 0.5m radius of tree base to depth of 50mm and replace with wood chip to settled depth of 75mm.	Low
15	Chamaecyparis	Mature	<b>Good</b>	Typical moderate (25 to 100mm diameter) and minor (less than 25mm diameter) deadwood throughout. Crown low over footway. Evidence of footway damage likely caused by T15.	Crown lift to 4m all round.  Remove deadwood more than 25mm diameter.	Low  Low
16	Yew	Middle aged	<b>Fair</b>	Minor included bark union at c2.5m hidden by bird box.	No works required at time of survey.	-
17	Holly	Mature	<b>Good</b>	Lower than normal leaf density. Crown grows low over footpath. Two stems from c2m with minor included bark union.	Crown lift to 3m all round.	Low
18	Holly	Mature	<b>Fair</b>	Slightly sparse canopy. Crown grows low over footpath.	Crown lift to 3m all round.	Low
19 (within G1)	Lime	Young	<b>Good</b>	3 <sup>rd</sup> Lime from east on southern line.	Instigate pollard regime at 8m height.	Low
G1	Avenue of Limes	Mature	<b>Fair</b>	Avenue of 24 Limes, 12 either side of footpath leading to North West gate. All mature except 3 and previously topped / pollarded at c9m. Recent pollard management. 4th Lime from East (on South side) has been removed.	Continue existing routine of pruning of regrowth: basal, epicormic to 3m.  Plant replacement Lime tree, south line, fourth from East.  Remove minor stem from replacement tree on southern line, 4 <sup>th</sup> from the west end.	Low  Low  Low
20	Holly	Middle aged	<b>Fair</b>	Lower than normal leaf density.	Cut turf and remove within 0.5m radius of tree base to depth of 50mm and replace with wood chip to settled depth of 75mm.	Low

TREE NO	SPECIES	AGE CLASS	CONDITION		RECOMMENDATIONS	PRIORITY
21	Cherry	Middle aged	<b>Fair</b>	Some past branch breakage evident. Mechanical damage at base.	Cut turf and remove within 0.5m radius of tree base to depth of 50mm and replace with wood chip to settled depth of 75mm.	Low
22	Holly	Mature	<b>Fair</b>	Sparse canopy.	No works required at time of survey.	-
23	Holly	Mature	<b>Good</b>	Sparse upper canopy. Two stems from ground level with good union.	Crown reduction to final height of 5m with 3m radial canopy spread.	Low
24	Irish Yew	Mature	<b>Good</b>	-	No works required at time of survey.	-
25	Lime	Mature	<b>Fair</b>	Neighbouring properties (c10m). Deadwood in crown up to 60mm diameter x 4m length. Past pruning wound on stem at approx. 9m on South side now possible cavity with decay. Crown low over path. Occasional overlong branches standing out from main canopy edge, particularly on South side.	Remove deadwood >25mm diameter. Crown lift to 4m all round. Selective tip reduction on North side to limit radial branch spread to North to 5m, to East to 6m, to South to 7m and to West to 6m. Reason: to reduce potential for branch failure and to maintain reasonable relationship with property to North.	Low Low Low
26	Poplar	Mature	<b>Good</b>	Two stems from 3.5m. Slight lean towards North West. Ivy on main stem obscuring survey.	No works required at time of survey.	-
27	Lawson cypress	Mature	<b>Good</b>	Series of stems form main structure of the tree canopy. Long swept branch arising at c2m and growing low over path.	Crown lift to 3m over path. Crown reduction from 16m to final height of 13m and 3m radial canopy spread.	Low Low
28	Irish Yew	Mature	<b>Good</b>	-	No works required at time of survey.	-
29	Holly	Mature	<b>Removed</b>	-	-	-

TREE NO	SPECIES	AGE CLASS	CONDITION		RECOMMENDATIONS	PRIORITY
30	Sycamore	Mature	Removed	-	-	-
31	Yew	Mature	Fair	Ivy on branch work and high in crown obscuring survey.	Remove ivy at base to 2m.	Low
32	Beech	Middle Aged	Good	-	No works required at time of survey.	-
33	Yew	Mature	Good	Crown grows low over road and footpath. Loose bark at base on road side with stem exudates.	Crown lift to 5m over road and 3m over footpath.	Low
34	Holly	Mature	Fair	Lower than normal leaf density. Triple stem from base with narrow minor included bark union.	No works required at time of survey.	-
35	Holly	-	Removed	-	Replace with <i>Ligustrum japonicum</i> or similar size at maturity.	Low
36	Hornbeam	Mature	Poor	Sparse, yellowing canopy with some minor deadwood (less than 25mm diameter). Multi stemmed from c1.5m. Minor epicormic growth on branches. Short term tree (less than 10 years) – 50% probability.	Cut turf and remove within 3m radius of tree base to depth of 50mm and replace with wood chip to settled depth of 75mm.  Remove deadwood more than 25mm diameter.	Low  Moderate
37	Crab apple	Mature	Fair	Slightly sparse canopy. Stands close to and leans towards pavilion with some small branches touching.	Clear building by 1.5m.	Low
38	Hawthorn	Mature	Good	Low branches over the footway. Minor mechanical damage at base.	Crown lift to 3m over footway.  Cut turf and remove within 0.5m radius of tree base to depth of 50mm and replace with wood chip to settled depth of 75mm.	Low  Low
39	Gingko	Young	Fair	Moderate historic mechanical damage at base.	Remove competing leader at c2.5m to improve long term form.	Low



TREE NO	SPECIES	AGE CLASS	CONDITION		RECOMMENDATIONS	PRIORITY
40	Plum	-	Removed	-	-	-
41	Indian Bean Tree	Mature	Fair	Slightly lower than normal leaf density. Smooth 'shiny' bark suggests this tree may be a favourite for climbing. Compacted ground around tree is likely to be contributing to poor tree health.	Cut turf and remove within 4m radius of tree base to depth of 50mm and replace with wood chip to settled depth of 75mm.	Low
42	Weeping Ash	Mature	Fair	Sparse canopy. Large lateral branch to South with decay on top side – reduced to lessen leverage on point of decay.	Remove.  Grind stump to 200mm depth below ground level.  Plant replacement ornamental tree, for instance <i>Ulmus glabra Camperdownii</i> (c3m height, 10-14cm girth at 1m).	Low  Low  Low
43	Rowan	-	Removed	-	-	-
44	Larch	-	Removed	-	-	-
115	Hornbeam	Young	Fair	Reduced to 1m.	No works required at time of survey.	-
116	Purple Plum	Mature	Good	Low branches over footway. Three stems from base with minor included bark union.	Crown lift to 3m over the footway.	Low
45	Lawson cypress	Mature	Removed	-	Plant replacement specimen of <i>Quercus frainetto</i> or similar size at maturity (c3m height, 10-14cm girth at 1m).	Low
46	Cedar	Mature	Removed	-	Plant replacement specimen of <i>Quercus frainetto</i> or similar size at maturity (c3m height, 10-14cm girth at 1m).	Low
47	Pine	Mature	Removed	-	Plant replacement specimen of <i>Quercus frainetto</i> or similar size at maturity (c3m height, 10-14cm girth at 1m).	Low
48	Pine	Mature	Removed	-	Plant replacement specimen of <i>Quercus frainetto</i> or similar size at maturity (c3m height, 10-14cm girth at 1m).	Low

TREE NO	SPECIES	AGE CLASS	CONDITION		RECOMMENDATIONS	PRIORITY
49	Wellingtonia	Mature	<b>Fair</b>	Previously lost or had top removed resulting in poor form. Massive surface root / basal growth to North.	No works required at time of survey.	-
50	Walnut	Mature	<b>Removed</b>	-	Replace with <i>Platanus occidentalis</i> (c3m height, 10-14cm girth at 1m).	Low
51	Wellingtonia	Mature	<b>Good</b>	Surface root with mower damage. Low branches.	Crown lift to 4m all round.	Low
52	Sweet Chestnut	Mature	<b>Good</b>	Typical moderate deadwood (25 - 100mm diameter) throughout. Bark loss to underside of branch at c6m on North side. Woodpecker hole at c7m on West side. Low branches over footway.	Remove deadwood more than 25mm diameter.  Reduce North and East branches at c6m to radial length of 4m.  Crown lift to 4m all round.	Low  Low  Low
53	Wellingtonia	Mature	<b>Good</b>		No works required at time of survey.	-
54	Wellingtonia	Mature	<b>Good</b>	Previously reduced with moderate regrowth. Overlong branches standing outside main canopy edge. Stands in children's play area.	No works required at time of survey.	-
55	Lime	Mature	<b>Removed</b>	-	Replace with <i>Platanus occidentalis</i> (c3m height, 10-14cm girth at 1m).	Low
56	Irish Yew	Mature	<b>Good</b>	Low branches over the footway.	Crown lift to 2.5m over footway. Maximum wound diameter to be 50mm.	Low
57	Yew	Mature	<b>Good</b>	Low branches over the footway. Close to building.	Crown lift to 2.5m over footway. Maximum wound diameter to be 50mm.  Clear building by 2m retaining overhanging branches outside this distance.	Low  Low

TREE NO	SPECIES	AGE CLASS	CONDITION		RECOMMENDATIONS	PRIORITY
58	Holly	Mature	<b>Good</b>	Two stems from base, tight fork. Tight union with reactive growth on South side at 2m. Low branches over the footway. Close to building.	Crown lift to 3m over footway. Maximum wound diameter to be 50mm.  Clear building by 2m retaining overhanging branches outside this distance.	Low  Low
59	Holly	Mature	<b>Good</b>	Two stems from base with good union. Low branches over the footway.	Crown lift to 3m over footway.	Low
60	Holly	Mature	<b>Fair</b>	Leans to North East.	No works required at time of survey.	-
61	Holly	Middle aged	<b>Fair</b>	Leans to East.	No works required at time of survey.	-
62	Hornbeam	Middle aged	<b>Fair</b>	Small tree standing under canopy of T63. Low branches over the footway.	Crown lift to 3m over footway.	Low
63	Sycamore	Mature	<b>Removed</b>	Stump carving – chair. Numerous fungal fruiting bodies on the stump remains.	No works required at time of survey.	-
64	Irish Yew	Mature	<b>Good</b>		No works required at time of survey.	-
65	Holly	Mature	<b>Good</b>	Low branches over the footway.	Crown lift to 3m over footway.	Low
66	Sycamore	Mature	<b>Fair</b>	Two stems from base and multi stemmed from c0.5m.	No works required at time of survey.	Low
67	Holly	Mature	<b>Good</b>	Low branches over the footway.	Crown lift to 3m over footway.	Low
68	Sycamore	Mature	<b>Fair</b>	Four large stems from base. Decay evident at base between stems from past lost stem. Crown grows low over parking area.	Crown lift to 5m all round.	Low

TREE NO	SPECIES	AGE CLASS	CONDITION		RECOMMENDATIONS	PRIORITY
69	Sycamore	Mature	<b>Good</b>	-	No works required at time of survey.	-
70	Sycamore	Mature	<b>Fair</b>	Four stems from base. Decay in base of stem adjacent to the footway.	No works required at time of survey.	-
71	Sycamore	Middle aged.	<b>Good</b>	Suppressed canopy.	No works required at time of survey.	-
72	Sycamore	Mature	<b>Good</b>	Two stems from 1.8m with minor compression fork with good reactive growth. Crown grows low over parking area.	Crown lift to 5m all round.	Low
73	Sycamore	Mature	<b>Fair</b>	Five stems from ground level. Tight union a 4-5m on North stem with reactive growth.	Crown lift to 5m all round.	Low
74	Yew	Mature	<b>Good</b>	Two stems from c0.5m. Low branches over the footway.	Crown lift to 3m over footway.	Low
75	Holly	Mature	<b>Good</b>	Two stems from c0.5m. Low branches over the footway.	Crown lift to 3m over footpath.	Low
76	Yew	Mature	<b>Good</b>	Low branches over the footway.	Crown lift to 3m over footpath.	Low
77	Lime	Mature	<b>Good</b>	Epicormic growth obscures survey.	Remove epicormic growth from base to 3m twice a year to allow survey.	Low
78	Holly	Mature	<b>Fair</b>	Suppressed canopy. Small tree under canopy of T77 and T79.	No works required at time of survey.	-
79	Horse Chestnut	Mature	<b>Fair</b>	Recent pollard to 5m. Cavity at base with extensive decay from 5m to base. Bark loss at base.	Remove.	Moderate

TREE NO	SPECIES	AGE CLASS	CONDITION		RECOMMENDATIONS	PRIORITY
80	Yew	Mature	<b>Fair</b>	Included bark union at base.	Crown lift to 4m over access road.	Low
81	Yew	Mature	<b>Good</b>		Crown lift to 4m over access road and 3m over footway.	Low
82	Lime	Mature	<b>Fair</b>	Recent pollard to c7m.	Remove epicormic growth from base to 3m twice a year to allow survey.	Low
83	Copper Beech	Mature	<b>Fair</b>	Growth to North West due to previous relationship with tree 79. Past pruning wound on stem at 4m on North West side. Two branches on North side at 8 and 10m with visible growth defects resembling upper bark damage / squirrel damage.	Crown lift to 5m all round.	Low
84	Yew	Mature	<b>Good</b>	Low branches over the footway.	Crown lift to 3m over footpath.	Low
85	Sycamore	Mature	<b>Fair</b>	Occasional large (more than 75 mm diameter). Lower stem has ring of raised bark / potential graft at 1.2m.	Remove deadwood more than 25mm diameter.	Moderate
86	Yew	Mature	<b>Good</b>	Stands within c0.5m of T85. Low branches over the footway.	Crown lift to 3m over footpath.	Low
87	Plum	Mature	<b>Fair</b>	Outside site. Included bark union at 2m.	No works required at time of survey.	-
88	Red Oak	Mature	<b>Good</b>	-	Clear lamp by 1.5m.	Low
89	Yew	Mature	<b>Good</b>	Low branches over the footway.	Crown lift to 3m over footpath.	Low
90	Yew	Mature	<b>Good</b>	Low branches over the footway.	Crown lift to 3m over footpath.	Low
91	Yew	Mature	<b>Good</b>	Low branches over the footway.	Crown lift to 3m over footpath.	Low

TREE NO	SPECIES	AGE CLASS	CONDITION		RECOMMENDATIONS	PRIORITY
92	Yew	Mature	<b>Good</b>	Low branches over the footway.	Crown lift to 3m over footpath.	Low
93	Sycamore	Mature	<b>Fair</b>	Close to adjacent building offsite. Two stems from c4.5m. Epicormic growth impedes survey.	Clear building by 3m retaining overhanging branches outside this distance.  Remove epicormic growth annually to allow survey.	Moderate  Low
94	Yew	Mature	<b>Good</b>	Low branches over the footway.	Crown lift to 3m over footpath.	Low
95	Yew	Mature	<b>Good</b>	Three stems from ground. Low branches over the footway.	Crown lift to 3m over footpath.	Low
96	Plum	Mature	<b>Removed</b>	-	Replace with <i>Platanus occidentalis</i> or similar (10-14cm girth at 1m).	Low
97	Yew	Mature	<b>Good</b>	Low branches over the footway. Close to adjacent building offsite.	Crown lift to 3m over footpath.  Clear building by 2m retaining overhanging branches outside this distance.	Low  Low
114	Cherry	Young	<b>Good</b>	-	No works required at time of survey.	-
98	Yew	Mature	<b>Good</b>	Close to adjacent building offsite. Electricity pole within 1m of stem.	Clear building by 2m retaining overhanging branches outside this distance.  Clear electricity pole by 1m.	Low  Low
99	Yew	Mature	<b>Good</b>	-	No works required at time of survey.	-

TREE NO	SPECIES	AGE CLASS	CONDITION		RECOMMENDATIONS	PRIORITY
100	Wellingtonia	Mature	<b>Good</b>	Large low sweeping branch grows out over raised planting island. Minor deadwood in crown. Series of past branch breakage / storm damage. Exudates from stem at 8m on east side of stem.	Remove deadwood more than 25mm diameter.  Selective tip reduction the occasional branch (c10) standing outside the main canopy edge to bring the branch in line with the main canopy shape - in particular branch to South West at c3m and North East at c15m. Final height to be 31m with 7m radial canopy spread.	Moderate  Moderate
101	Holly	Middle aged	<b>Good</b>	-	No works required at the time of the survey.	-
102	Yew	Middle aged	<b>Good</b>	Low branches over footway.	Crown lift to 2.5m over footway.	Low
103	Holly	Mature	<b>Good</b>	-	Crown lift to 2.5m over footway.	Low
104	Pear	Middle aged	<b>Good</b>	Bark damage round base of stem.	Cut turf and remove within 0.5m radius of tree base to depth of 50mm and replace with wood chip to settled depth of 75mm.	Low
105	Holly	Middle aged	<b>Fair</b>	Sparse canopy.	Crown lift to 3m over footway.	Low
106	Irish Yew	Mature	<b>Good</b>	-	Sever Ivy at ground level.  Crown lift to 2.5m over footway.	Low  Low
107	Holly	Middle aged	<b>Good</b>	8 stems from base, good unions.	No works required at the time of the survey.	-
108	Cherry	Middle aged	<b>Poor</b>	Sparse canopy. Severe mechanical damage at base.	Cut turf and remove within 0.5m radius of tree base to depth of 50mm and replace with wood chip to settled depth of 75mm.	Low
109	Sophora japonica	Young	<b>Good</b>	-	Cut turf and remove within 0.5m radius of tree base to depth of 50mm and replace with wood chip to settled depth of 75mm.	Low

TREE NO	SPECIES	AGE CLASS	CONDITION		RECOMMENDATIONS	PRIORITY
110	Dawn Redwood <i>Taxodium distichum</i>	Young	Good	-	Cut turf and remove within 0.5m radius of tree base to depth of 50mm and replace with wood chip to settled depth of 75mm.	Low
111	Foxglove tree <i>Paulownia tomentosa</i>	Young	Good	-	Cut turf and remove within 0.5m radius of tree base to depth of 50mm and replace with wood chip to settled depth of 75mm.	Low
112	Lime <i>Tilia tomentosa</i> 'Brabant'	Young	Good	-	Cut turf and remove within 0.5m radius of tree base to depth of 50mm and replace with wood chip to settled depth of 75mm.	Low
113	Cotoneaster (x2)	Mature	Removed	-	-	-
114	-	-	-	Tree details are given between tree numbers 97 and 98. Located on site plan between 98 and 120.	-	-
115	-	-	-	Tree details are given between tree numbers 44 and 45. Located on site plan between 38 and 100.	-	-
116	-	-	-	Tree details are given between tree numbers 44 and 45. Located on site plan between 42 and 44.	-	-
117	Yew	Mature	Removed	-	-	-
118	Yew	Mature	Removed	-	-	-
119	-	-	-	Tree details are given between tree numbers 3 and 4. Located on site plan between 3 and 4.	-	-

**Resurvey: To be complete by 1<sup>st</sup> September 2022.**



## General notes

The tree survey has been carried out in relation to the landowner's duty under the Occupier's Liability Act 1984 and common law. The tree survey was carried out from ground level, identifying significant tree features that may have significant bearing upon the condition and management of the tree and giving appropriate recommendations and priorities. All dimensions are estimated. No soil investigations will be carried out.

To carry out the tree survey reasonable access around the base of the tree is required. Where this is not feasible, these parts of the tree may not be able to be inspected. If view of the entire structure of the tree(s) is limited, for instance by the properties in private ownership, this is a limitation to the tree survey and some parts of the tree may not be able to be fully surveyed. The tree survey will be carried out from the ground with the aid of binoculars if necessary. The tree will not be climbed as part of this survey.

Typical significant defects that are to be identified can be referred to in "Hazards from Trees, a general guide" by David Lonsdale and "The body language of trees" by Claus Mattheck published by the Forestry Commission and the Department of the Environment respectively.

The tree survey can only be an assessment of the tree at the time of the survey and the tree(s) should be re-surveyed on a regular basis. An appropriate time period between surveys may be up to 5 years depending upon the condition of the trees, their maturity and the target(s). Recommendations for the period between surveys will be given.

As trees are dynamic structures their condition and health may change in a short period of time, particularly in relation to changes in their immediate environment and circumstances. Therefore, the survey is an assessment of the trees at the time of the survey only. If there is a significant change in the immediate environment and circumstances, then this should be brought to the attention of the Arboriculturalist so that they may advise accordingly.

I have not checked whether the site is within a Conservation Area or whether the trees are under Tree Preservation Order (TPO). Prior to any tree works confirmation of whether these legal restrictions apply to the site or trees ought to be sought from the Local Planning Authority (LPA). If the trees stand within a Conservation Area designated under the Town and Country Planning Act the LPA will normally require 6 weeks notice of intention to carry out any tree works as detailed in the survey. If the trees are under TPO then the LPA will normally require an application for any tree works. Some tree works are exempt, for instance if the trees are dead or dangerous, and certain works can be carried out without application. It is necessary to give the LPA at least five days notice prior to carrying out any of these tree works under these exemptions. This survey, with recommendations, can be used to support any such application or notice.

Wildlife issues are of significant concern to the general public. A balance has to be found between the protection of wildlife and the need for safety when managing trees. The Wildlife and Countryside Act (1980) and Countryside Rights of Way Act (2000) give statutory protection to wild birds, bats, mammals, some invertebrates and plants. It is important to ensure that this legislation is properly considered when carrying out any works to trees.

Bird nests were not identified whilst on site. However, any Arborist carrying out the tree works should ensure that there is no disturbance to nesting birds prior to the works being carried out. Further guidance upon the appropriate timing of the works can be sought from DEFRA, if necessary. Where nesting birds are found, further information should be sought from DEFRA 08459 33 55 77 or [helpline@defra.gsi.gov.uk](mailto:helpline@defra.gsi.gov.uk). Prior to any works being implemented the tree contractor must identify whether there are any bats or birds using the tree as roost or nest. If such habitation is identified, then the tree contractor must obtain the necessary licence from Natural England (0845 601 4523 [www.naturalengland.org.uk](http://www.naturalengland.org.uk)) to carry out the works.

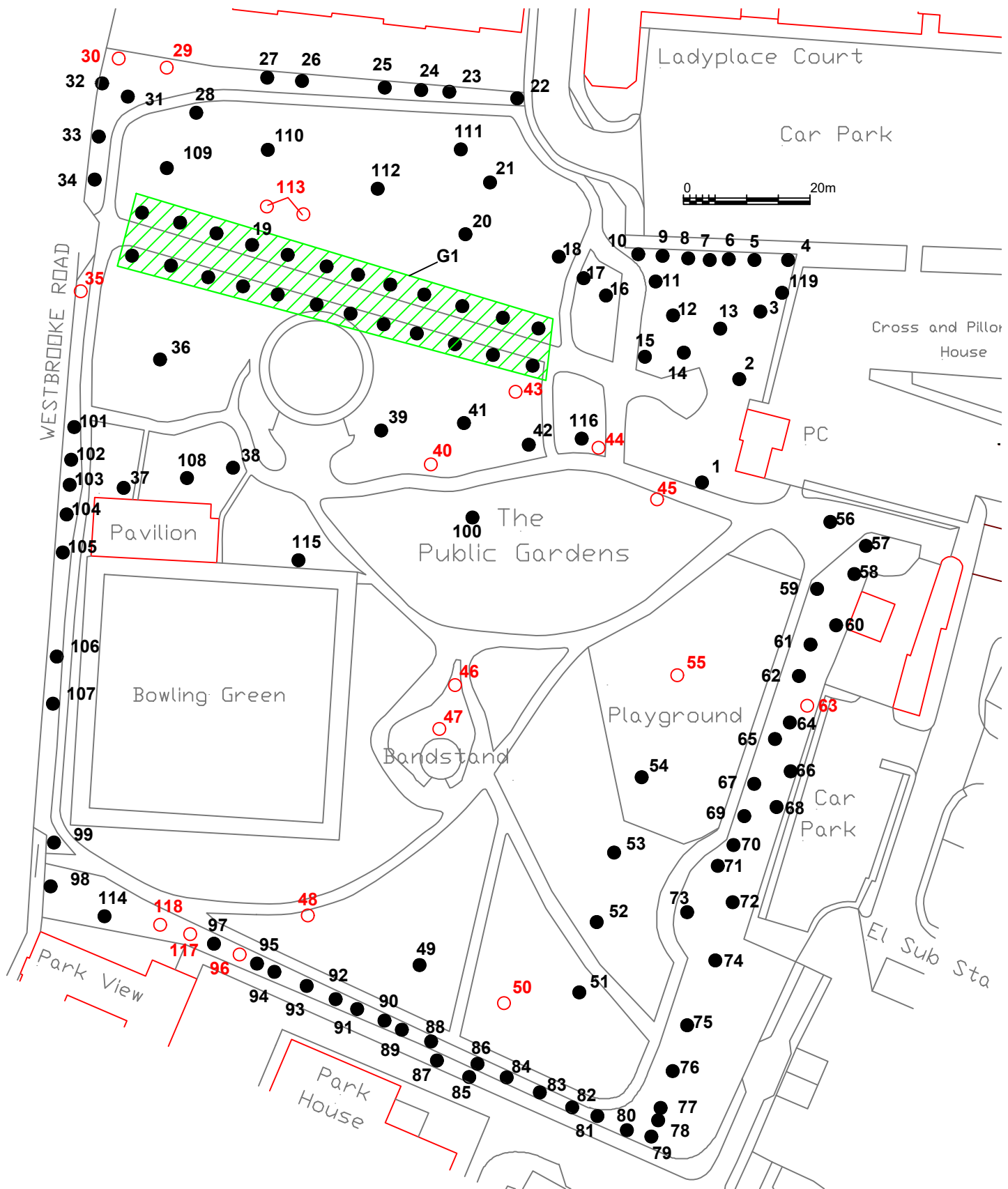
A bat survey prior to tree works is not recommended, except where there is a high potential for habitat. During the tree works, the contractor should carry out the tree works with bats as an active consideration and follow the current industry best practice, e.g. Arboricultural Association Guidance Note 1 Bats in the context of tree work operations 2011, BS8596 Micro guide to surveying for bats in trees and woodland <https://shop.bsigroup.com/upload/273444/BSI-Bat-Microguide-UK-EN.pdf> which a competent tree contractor should be familiar with.

Biosecurity measures: To minimise the potential for contamination of the tree from other tree works it is appropriate to sterilise tools to be used before and after the works are implemented. Appropriate disinfectant includes Propellor or Cleankill Sanitizing spray. Loose debris is to be brushed off prior to treating with disinfectant to ensure appropriate application. See [http://www.forestry.gov.uk/pdf/FCMS028-guidance.pdf/\\$file/FCMS028-guidance.pdf](http://www.forestry.gov.uk/pdf/FCMS028-guidance.pdf/$file/FCMS028-guidance.pdf) for further information on Biosecurity and <http://www.forestry.gov.uk/forestry/infd-9fjd2d> for disinfectant information.

## Key to condition survey sheet

<b>No</b>	Tree number.	
<b>Species</b>	Species of tree.	
<b>Height</b>	Height measured in metres.	
<b>Branch Spread</b>	Branch spread in metres taken at the four cardinal points to derive an accurate representation of the crown.	
<b>Height of crown</b>	Height in metres of crown clearance above adjacent ground level.	
<b>Age Class (Age)</b>	<b>Young</b>	A tree considered to be less than approximately 20 years old.
	<b>Middle aged</b>	A tree in approximately the first 1/5th of its normal life span with apical dominance (rapidly growing with a clear main leader) and not yet fully at its environmental potential full height.
	<b>Mature</b>	A tree in its 2/5ths to 5/5ths of its normal life span with apical dominance lost and at its environmental potential full height.
<b>Condition</b> (Physiological and Structural)	<b>Good</b>	Full healthy canopy; but possibly including some suppressed branches or minor physical damage. A tree that requires little or no tree works and is anticipated to be retained for over 20 years.
	<b>Fair</b>	Slightly reduced leaf cover, minor dead wood, or isolated major deadwood. A tree that requires tree works to remove defects and/or improve the form so that it may be anticipated to be retained for over 5 years.
	<b>Poor</b>	Overall sparse leafing or extensive dead wood. A tree that has a significant proportion of defects and/or requires considerable tree works to aid its retention and/or where the retention of the tree is not anticipated beyond 5 years.
	<b>Very poor</b>	Large areas of crown dead. A tree that has a significant proportion of defects and/or requires considerable tree works to aid its retention.
<b>Recommendations</b>	As per BS3998: 2010 Recommendations for Tree Works.	
<b>Priority</b>	<b>Immediate</b>	Works should be carried out immediately as the probability of harm or damage occurring is likely.
	<b>High</b>	These works are important to carry out as soon as reasonably possible and any budget available for tree management should be spent upon these trees before the moderate and low categories. Works in this category usually will relate to abatement of risk for harm and or damage to occur. Ideally works in this category are anticipated to be carried out within 1 month.
	<b>Moderate</b>	These works are important to carry out as soon as reasonably possible and any budget available for tree management should be spent upon these trees before the low categories. Works in this category usually will relate to abatement of risk for harm and or damage to occur and for the good arboricultural management of the trees. Ideally works in this category are anticipated to be carried out within 3 months.
	<b>Low</b>	Works in this category usually will relate to the good arboricultural management of the trees. Ideally works in this category are anticipated to be carried out within 12 months.
<b>Re-survey</b>	This is the time period in which it is recommended that the tree is surveyed again. This is based upon the condition of the tree, its location, previous, current and future management. It is normally expressed at a time period from the date of the report / survey, whichever is the sooner. If no time period is noted, then the default period is one year.	

## Site plan



**General / Key:**

Indicative tree position ●  
 Removed tree ○

**Site:** Public Gardens

**Data:** Ordnance survey data provided under licence 100019980. Crown copyright. All rights reserved.

This drawing is produced in colour. Please ensure that you use a colour printing to ensure that the drawing is correctly interpreted.

This drawing is copyright of Sapling Arboriculture Limited and may not be copied, altered or reproduced in any way without writtent authority from Sapling Arboriculture Limited.

**Drawing title:**

Tree survey plan

**Drawing reference:** J064.16.01

**Revision:** -

**Date:** May 2020

**Scale:** Not identified on A4

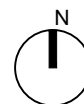
**Sheet:** 1 of 1

# sapling

arboriculture limited  
 registered in england: 5414238

T: 01420 550 160  
 E: enquires@saplingarboriculture.com  
 W: www.saplingarboriculture.com

**Ben Abbatt**  
 Dip. Arb. (RFS), BA (Hons), MICFor, MRICS, CEnv  
 Arboricultural Association Registered Consultant





© 2020

This document was written by, belongs to and is copyright to Sapling Arboriculture Limited. It contains valuable Sapling Arboriculture Limited proprietary and confidential information which is disclosed only for the purposes of the client's assessment and evaluation of the project which is the subject of this report. The contents of this document shall not, in whole or in part (i) be used for any other purposes except such assessment and evaluation of the project; (ii) be relied upon in any way by the person other than the client (iii) be disclosed to any member of the client's organisation who is not required to know such information nor to any third party individual or organisation, or (iv) be copied or stored in any retrieval system nor otherwise be reproduced or transmitted in any form by photocopying or any optical, electronic, mechanical or other means, without prior written consent of the Company Secretary Director, Sapling Arboriculture Limited, to whom all requests should be sent. Accordingly, no responsibility or liability is accepted by Sapling Arboriculture Limited towards any other person in respect of the use of this document or reliance on the information contained within it, except as may be designated by law for any matter outside the scope of this document.