

**Tree condition survey**  
at  
**Windmill Hill and Chawton Park Road Alton**  
for  
**Alton Town Council**

**sapling arboriculture ltd**

Ben Abbatt  
Dip. Arb. (RFS), BA (Hons), MICFor, MRICS, CEnv  
Arboricultural Association Registered Consultant



Holbache Mount Pleasant Road, Alton, Hants,  
GU34 2RS

t: 01420 550 160  
e: [enquiries@saplingarboriculture.com](mailto:enquiries@saplingarboriculture.com)  
w: [www.saplingarboriculture.com](http://www.saplingarboriculture.com)

Reference: J064.16.02  
July 2020



## Contents

Instruction	3
Tree condition survey data	4
Open space at Windmill Hill	4
Open space adjacent to Chawton Park Road and Connaught Way	9
Open space adjacent to Play area, Connaught Way and Robertson Close	16
General notes	19
Key to condition survey	20
Site plan	21

## **Instruction**

The tree survey is to be carried out in relation to the landowner's duty under the Occupier's Liability Act 1984 and common law. The tree survey will be carried out from ground level, identifying significant tree features that may have significant bearing upon the condition and management of the tree and giving appropriate recommendations and priorities.

The tree survey of the sites is to be a negative return survey whereby only those trees requiring works are recorded.

Typical significant defects that are to be identified can be referred to in "Hazards from Trees, a general guide" by David Lonsdale and "The body language of trees" by Claus Mattheck published by the Forestry Commission and the Department of the Environment respectively.

## Tree Condition Survey Data

Site: Windmill Hill  
 Date: 9<sup>th</sup> June 2020  
 Weather: Clear with light wind.  
 Surveyed by: Ben Abbatt  
 Resurvey: To be complete by the 30<sup>th</sup> July 2023

Designation	Reference number	Species	Age class	Physiological condition	Structural condition	Condition notes	Condition related tree works	Priority
G	1801	Beech, ash, Norway maple, oak, sycamore, birch, horse chestnut	Mature	Good	Fair	Access impeded by vegetation. Squirrel damage throughout on thin barked trees. Ivy impedes survey.	Clear 2m wide access along the property boundary to create and maintain access. Reason: to allow maintenance and survey.  Sever ivy at base and remove to 2m using hand tools only and taking care to avoid damage to the bark beneath. Reason to allow survey.	Low
T	1802	Norway Maple	Mature	Fair	Fair	Declining canopy. Included bark union at 1.5m.	Remove. Treat stump to prevent regrowth.	Low
T	1803	Norway Maple	Middle aged	Fair	Good	Declining canopy.	No works required at the time of the survey.	
T	1804	Birch	Mature	Poor		Severe decline.	Remove.	Low
T	1805	Cherry	Middle aged	Good	Poor	Series of included bark unions from 2m. Ivy impedes survey.	Reduce to 2.5m pollard. Sever ivy at base and remove to 2m using hand tools only and taking care to avoid damage to the bark beneath.	Low
T	1806	Cherry	Middle aged	Good	Poor	Series of included bark unions from 0.5m. Ivy impedes survey. Adjacent to field entrance.	Reduce to 2.5m pollard. Sever ivy at base and remove to 2m using hand tools only and taking care to avoid damage to the bark beneath.	Moderate

Designation	Reference number	Species	Age class	Physiological condition	Structural condition	Condition notes	Condition related tree works	Priority
T	1807	Cherry	Middle aged	Good	Poor	Series of branch failures. Series of included bark unions from 0.5m. Ivy impedes survey. Adjacent to field entrance.	Reduce to 2.5m pollard. Sever ivy at base and remove to 2m using hand tools only and taking care to avoid damage to the bark beneath.	Moderate
T	1808	Cherry	Middle aged	Good	Poor	Series of included bark unions from 0.5m. Ivy impedes survey. Adjacent to field entrance.	Reduce to 2.5m pollard. Sever ivy at base and remove to 2m using hand tools only and taking care to avoid damage to the bark beneath.	Moderate
T	1809	Hawthorn	Mature	Good		Ivy impedes survey. Immediately adjacent to field entrance.	Sever ivy at base and remove to 2m using hand tools only and taking care to avoid damage to the bark beneath.	Moderate
G	1810	Cherry, beech, lime, Norway maple, ash	Mature	Good	Fair	Low growth over the footway. Beech and Norway maple frequently with included bark unions. Ivy impedes survey. Self-set Norway maple and ash regeneration throughout.	Crown lift to 3m over the footway. Forestry thin by 15% to remove trees of poor form and structure allowing trees of good form and structure to develop.  Sever ivy at base and remove to 2m using hand tools only and taking care to avoid damage to the bark beneath.  Annual clearing saw use through the woodland copse to remove self-set trees.	Low
T	1811	Lime	Mature	Good	Fair	Included bark union at 1m.	Remove northern stem at 1m.	Low
T	1812	Beech	Mature	Good	Fair	Included bark union at 2m.	Remove.	Low
T	1813	Norway Maple	Mature	Good	Fair	Bark wound at base to 2m.	Remove.	Low
T	1814	Beech	Mature	Good	Fair	Included bark union at 2m.	Remove.	Low

Designation	Reference number	Species	Age class	Physiological condition	Structural condition	Condition notes	Condition related tree works	Priority
T	1815	Beech	Mature	Good	Fair	Overlong branch at 3m to north / adjacent properties.	Remove branch at 3m.	Low
T	1816	Beech	Mature	Good	Fair	Included bark union at 1m.	Remove.	Low
T	1817	Beech	Mature	Good	Fair	Included bark union at 3m..	Remove.	Low
T	1818	Ash	Middle aged	Poor	Good	Severe decline commensurate with ash dieback.	Remove. Treat stump to prevent regrowth.	Moderate
T	1819	Ash	Middle aged	Poor	Good	Severe decline commensurate with ash dieback.	Remove. Treat stump to prevent regrowth.	Moderate
T	1820	Ash	Mature	Poor	Good	Severe decline commensurate with ash dieback. Tag on fence post.	Remove. Treat stump to prevent regrowth.	Moderate
T	1821	Ash	Middle aged	Poor	Good	Severe decline commensurate with ash dieback.	Remove. Treat stump to prevent regrowth.	Moderate
G	1922	Beech, alder, Norway maple, cherry	Mature	Good	Poor	Numerous trees with included bark unions. Deadwood throughout. Squirrel damage throughout. Fire damage to base of trees and bark loss at base.	Forestry thin by 15% to remove trees of poor form (for instance included bark union, leaning tree) and structure to allow trees of good form and structure to develop.  Remove deadwood above informal pedestrian paths through copse.	Low
T	1823	Beech	Middle aged	Dead			Remove.	Low
T	1824	Beech	Mature	Fair	Poor	Bark loss at the base.	Remove.	Low

Designation	Reference number	Species	Age class	Physiological condition	Structural condition	Condition notes	Condition related tree works	Priority
T	1825	Beech	Mature	Fair	Poor	Bark loss at the base.	Remove.	Low
T	1826	Beech	Mature	Fair	Poor	Bark loss at the base.	Remove.	Low
T	1827	Beech	Middle aged	Dead			Remove.	Low
T	1828	Beech	Middle aged	Dead			Remove.	Low
T	1829	Cherry	Mature	Good	Poor	Series of collapsed stems.	Coppice.	Low
T	1830	Cherry	Mature	Good	Fair	Suppressed canopy. Species susceptibility to structural failure.	Coppice.	Low
G	1831	Beech, alder, hawthorn, rowan, cherry, oak, elder	Mature	Good	Poor	Numerous trees with included bark unions. Deadwood throughout. Squirrel damage throughout leading to deadwood, particularly in the upper canopies. Fire damage to occasional trees. Bark damage (browsing and vandalism to the buttress roots and lower stem of occasional trees.	Forestry thin by 15% to remove trees of poor form (for instance included bark union, leaning tree) and structure to allow trees of good form and structure to develop.  Remove deadwood above informal pedestrian paths through copse.	Low
T	1832	Beech	Middle aged	Dead			Remove.	Low
T	1833	Oak	Mature	Fair	Fair	Squirrel damage in upper canopy leading to large deadwood over adjacent informal footpath.	Remove deadwood and branches with significant squirrel damage.	Moderate
T	1834	Oak	Mature	Fair	Fair	Squirrel damage in upper canopy leading to large deadwood over adjacent informal footpath.	Remove deadwood and branches with significant squirrel damage.	Moderate

Designation	Reference number	Species	Age class	Physiological condition	Structural condition	Condition notes	Condition related tree works	Priority
T	1835	Oak	Mature	Fair	Fair	Squirrel damage in upper canopy leading to large deadwood over adjacent informal footpath.	Remove deadwood and branches with significant squirrel damage.	Moderate
G	1836	Cherry	Mature	Good	Poor	Group of c17 cherry. Series of structural failures. Adjacent to footway and water board structures.	Coppice.	Moderate
T	1837	Beech	Mature	Fair	Fair	Squirrel damage in upper canopy leading to large deadwood.	Remove deadwood and branches with significant squirrel damage.	Low
All stem wood to be removed from site to reduce fire risk.								
All branch wood arisings to be chipped and spread over wide area within woodland <b>avoiding damage to trees.</b>								



## Tree Condition Survey Data

Site: Chawton Park Road, Connaught Way, Play area, Robertson Close

Date: 16<sup>th</sup> June 2020

Weather: Clear with light wind.

Surveyed by: Ben Abbatt

Resurvey: To be complete by the 30<sup>th</sup> July 2023

Designation	Reference number	Species	Age class	Physiological condition	Structural condition	Condition notes	Condition related tree works	Priority
Open space adjacent to Chawton Park Road and Connaught Way								
G	1	Lime	Mature	Good	Fair	Double line of pollarded lime at c5m centres with mature regrowth, epicormic growth and ivy.	See work for each individual tree.	
G	1.1	Lime	Mature	Good	Fair	Pollard at 5m with 6m regrowth. Epicormic growth impedes survey.	Pollard at 5m. Remove epicormic growth to 5m.	Moderate
T	1.2	Lime	Mature	Good	Fair	Pollard at 5m with 6m regrowth. Epicormic growth and ivy impedes survey.	Pollard at 5m. Remove epicormic growth to 5m. Sever ivy at base and remove to 2m using hand tools only and taking care to avoid damage to the bark beneath.	Moderate
T	1.3	Lime	Mature	Good	Fair	Pollard at 5m with 6m regrowth. Epicormic growth and ivy impedes survey.	Pollard at 5m. Remove epicormic growth to 5m. Sever ivy at base and remove to 2m using hand tools only and taking care to avoid damage to the bark beneath.	Moderate

Designation	Reference number	Species	Age class	Physiological condition	Structural condition	Condition notes	Condition related tree works	Priority
T	1.4	Lime	Mature	Good	Fair	Pollard at 5m with 6m regrowth. Epicormic growth impedes survey.	Pollard at 5m. Remove epicormic growth to 5m.	Moderate
T	1.5	Lime	Mature	Good	Fair	Pollard at 5m with 6m regrowth. Epicormic growth impedes survey.	Pollard at 5m. Remove epicormic growth to 5m.	Moderate
T	1.6	Lime	Mature	Good	Fair	Pollard at 5m with 6m regrowth. Epicormic growth impedes survey.	Pollard at 5m. Remove epicormic growth to 5m.	Moderate
T	1.7	Lime	Mature	Good	Fair	Pollard at 5m with 6m regrowth. Epicormic growth and ivy impedes survey.	Pollard at 5m. Remove epicormic growth to 5m. Sever ivy at base and remove to 2m using hand tools only and taking care to avoid damage to the bark beneath.	Moderate
T	1.8	Lime	Mature	Good	Fair	Pollard at 5m with 6m regrowth. Epicormic growth and ivy impedes survey.	Pollard at 5m. Remove epicormic growth to 5m. Sever ivy at base and remove to 2m using hand tools only and taking care to avoid damage to the bark beneath.	Moderate
T	1.9	Lime	Mature	Good	Fair	Pollard at 5m with 6m regrowth. Epicormic growth impedes survey.	Pollard at 5m. Remove epicormic growth to 5m.	Moderate
T	1.10.	Lime	Mature	Good	Fair	Pollard at 5m with 6m regrowth. Epicormic growth and ivy impedes survey.	Pollard at 5m. Remove epicormic growth to 5m. Sever ivy at base and remove to 2m using hand tools only and taking care to avoid damage to the bark beneath.	Moderate

Designation	Reference number	Species	Age class	Physiological condition	Structural condition	Condition notes	Condition related tree works	Priority
T	1.11	Lime	Mature	Good	Fair	Pollard at 5m with 6m regrowth. Epicormic growth and ivy impedes survey.	<p>Pollard at 5m.</p> <p>Remove epicormic growth to 5m.</p> <p>Sever ivy at base and remove to 2m using hand tools only and taking care to avoid damage to the bark beneath.</p>	Moderate
T	1.12	Lime	Mature	Good	Fair	Pollard at 5m with 6m regrowth. Epicormic growth impedes survey.	<p>Pollard at 5m.</p> <p>Remove epicormic growth to 5m.</p>	Moderate
T	1.13	Lime	Mature	Good	Fair	Pollard at 5m with 6m regrowth. Epicormic growth and ivy impedes survey.	<p>Pollard at 5m.</p> <p>Remove epicormic growth to 5m.</p> <p>Sever ivy at base and remove to 2m using hand tools only and taking care to avoid damage to the bark beneath.</p>	Moderate
T	1.14	Lime	Mature	Good	Fair	Pollard at 5m with 6m regrowth. Epicormic growth and ivy impedes survey.	<p>Pollard at 5m.</p> <p>Remove epicormic growth to 5m.</p> <p>Sever ivy at base and remove to 2m using hand tools only and taking care to avoid damage to the bark beneath.</p>	Moderate
T	1.15	Lime	Mature	Good	Fair	Pollard at 5m with 6m regrowth. Epicormic growth and ivy impedes survey.	<p>Pollard at 5m.</p> <p>Remove epicormic growth to 5m.</p> <p>Sever ivy at base and remove to 2m using hand tools only and taking care to avoid damage to the bark beneath.</p>	Moderate

Designation	Reference number	Species	Age class	Physiological condition	Structural condition	Condition notes	Condition related tree works	Priority
T	1.16	Lime	Mature	Good	Fair	Pollard at 5m with 6m regrowth. Epicormic growth and ivy impedes survey.	Pollard at 5m.  Remove epicormic growth to 5m.  Sever ivy at base and remove to 2m using hand tools only and taking care to avoid damage to the bark beneath.	Moderate
T	1.17	Lime	Mature	Good	Fair	Pollard at 5m with 6m regrowth. Epicormic growth impedes survey.	Pollard at 5m.  Remove epicormic growth to 5m.	Moderate
T	1.18	Lime	Mature	Good	Fair	Pollard at 5m with 6m regrowth. Epicormic growth impedes survey.	Pollard at 5m.  Remove epicormic growth to 5m.	Moderate
T	1.19	Lime	Mature	Good	Fair	Pollard at 5m with 6m regrowth. Epicormic growth and ivy impedes survey.	Pollard at 5m.  Remove epicormic growth to 5m.  Sever ivy at base and remove to 2m using hand tools only and taking care to avoid damage to the bark beneath.	Moderate
T	1.20	Lime	Mature	Good	Fair	Pollard at 5m with 6m regrowth. Epicormic growth impedes survey.	Pollard at 5m.  Remove epicormic growth to 5m.	Moderate
T	1.21	Lime	Mature	Good	Fair	Pollard at 5m with 6m regrowth. Epicormic growth and ivy impedes survey.	Pollard at 5m.  Remove epicormic growth to 5m.  Sever ivy at base and remove to 2m using hand tools only and taking care to avoid damage to the bark beneath.	Moderate

Designation	Reference number	Species	Age class	Physiological condition	Structural condition	Condition notes	Condition related tree works	Priority
T	1.22	Lime	Mature	Good	Fair	Pollard at 5m with 6m regrowth. Top lost from failed pollard. Epicormic growth impedes survey.	Pollard at 5m. Remove epicormic growth to 5m.	Moderate
T	1.23	Lime	Mature	Good	Fair	Pollard at 5m with 6m regrowth. Epicormic growth impedes survey.	Pollard at 5m. Remove epicormic growth to 5m.	Moderate
T	1.24	Lime	Mature	Good	Fair	Pollard at 5m with 6m regrowth. Epicormic growth and ivy impedes survey.	Pollard at 5m. Remove epicormic growth to 5m. Sever ivy at base and remove to 2m using hand tools only and taking care to avoid damage to the bark beneath.	Moderate
T	1.25	Lime	Mature	Good	Fair	Pollard at 5m with 6m regrowth. Epicormic growth and ivy impedes survey.	Pollard at 5m. Remove epicormic growth to 5m. Sever ivy at base and remove to 2m using hand tools only and taking care to avoid damage to the bark beneath.	Moderate
T	1.26	Lime	Mature	Good	Fair	Pollard at 5m with 6m regrowth. Epicormic growth and ivy impedes survey.	Pollard at 5m. Remove epicormic growth to 5m. Sever ivy at base and remove to 2m using hand tools only and taking care to avoid damage to the bark beneath.	Moderate

Designation	Reference number	Species	Age class	Physiological condition	Structural condition	Condition notes	Condition related tree works	Priority
T	1.27	Lime	Mature	Good	Fair	Pollard at 5m with 6m regrowth. Epicormic growth and ivy impedes survey.	Pollard at 5m.  Remove epicormic growth to 5m.  Sever ivy at base and remove to 2m using hand tools only and taking care to avoid damage to the bark beneath.	Moderate
T	1.28	Lime	Mature	Good	Fair	Pollard at 5m with 6m regrowth. Epicormic growth and ivy impedes survey.	Pollard at 5m.  Remove epicormic growth to 5m.  Sever ivy at base and remove to 2m using hand tools only and taking care to avoid damage to the bark beneath.	Moderate
T	1.29	Lime	Mature	Good	Fair	Pollard at 5m with 6m regrowth. Epicormic growth impedes survey.	Pollard at 5m.  Remove epicormic growth to 5m.	Moderate
T	1.30.	Lime	Mature	Good	Fair	Pollard at 5m with 6m regrowth. Epicormic growth impedes survey.	Pollard at 5m.  Remove epicormic growth to 5m.	Moderate
T	1.31	Lime	Mature	Good	Fair	Pollard at 5m with 6m regrowth. Epicormic growth impedes survey.	Pollard at 5m.  Remove epicormic growth to 5m.	Moderate
G	2	Oak, hazel, field maple, lime	Mature	Good	Fair	Group of mature oak on top of embankment with hazel understorey encroaching on grass area.	Crown lift to 4m within 2m of the base of the embankment to allow maintenance and access.	Moderate

Designation	Reference number	Species	Age class	Physiological condition	Structural condition	Condition notes	Condition related tree works	Priority
T	0095	Oak	Mature	Good	Fair	Typical large and moderate deadwood throughout. Overlong branches, particularly over the carriageway. Ivy impedes survey.	<p>Remove deadwood more than 25mm diameter.</p> <p>Tip reduction of branches from c10m canopy spread to an 8m horizontal canopy spread, particularly over the carriageway.</p> <p>Remove dead ivy.</p> <p>Sever ivy at base and remove to 2m using hand tools only and taking care to avoid damage to the bark beneath.</p> <p>Crown lift to 5m over the carriageway and 4m over the remainder.</p>	Moderate
T	0096	Oak	Mature	Good	Fair	Typical large and moderate deadwood throughout. Ivy impedes survey.	<p>Remove deadwood more than 25mm diameter.</p> <p>Sever ivy at base and remove to 2m using hand tools only and taking care to avoid damage to the bark beneath.</p> <p>Crown lift to 4m, maximum wound diameter of 75mm.</p>	Moderate

Designation	Reference number	Species	Age class	Physiological condition	Structural condition	Condition notes	Condition related tree works	Priority
Open space adjacent to play area, Connaught Way and Robertson Close								
T	0097	Beech	Mature	Good	Poor	Bark loss from roots on tension side predisposing failure towards the access road and play area.	Remove.	Low
T	0098	Horse chestnut	Middle aged	Fair	Poor	Yellowing foliage. Bark loss on lower stem. Two stems from the base.	Remove.	Low
T	0099	Horse chestnut	Mature	Poor	Poor	Stem failure adjacent to 11kv powerlines. Remaining two thirds highly likely to fail. Possibly outside the site.	<b>Seek immediate advice from the power company on the removal of the tree.</b> <b>Remove.</b>	<b>High</b>
T	0695	Dead	Middle aged				Remove.	Moderate
T	0696	Dead	Middle aged				Remove.	Moderate
T	0697	Beech	Mature	Good	Poor	Squirrel damage to main branches on top / tension side over footway.	Remove.	Moderate
T	0698	Horse chestnut	Mature	Fair	Poor	Yellowing foliage. Vertical bark loss on two stems adjacent to the footway.	Remove.	Moderate
T	0699	Horse chestnut	Middle aged		Poor	Failed stem over the footway caught up in smaller trees.	Remove.	Moderate
T	0700	Horse chestnut	Mature	Good	Poor	Asymmetrical canopy and lean over the footway.	Remove.	Moderate
T	0398	Beech	Mature		Poor	Series of primary branch failures. Crack with subsequent decay from base to more than 12m on tension side over footway and turning head.	<b>Remove.</b>	<b>High</b>



Designation	Reference number	Species	Age class	Physiological condition	Structural condition	Condition notes	Condition related tree works	Priority
G	3	Horse chestnut, beech, Corsican pine, sycamore, ash	Mature	Fair	Poor	Asymmetrical canopies to south and north predisposing trees to spiral cracks, branch loss, root plate failure.	Reduce the canopies of the trees to a maximum horizontal radial canopy spread of 8m. Reason: to reduce the potential for failure.	Low
						Trees leaning outward from the group increasing the potential for stem and root plate failure.	Remove trees with a lean of 15 degrees or more from the vertical. Reason: to reduce the potential for failure.	Low
						Trees with 'v' shaped included bark unions (weaker attachment than normal 'u' shaped tension union).	Remove trees with included bark unions. Reason: to reduce the potential for failure.	Low
						Loss of companion shelter in north western corner increasing potential for windthrow.	Crown reduction of trees adjacent to the removed trees to reduce their height by 1/6 <sup>th</sup> of their overall height. Reason: to reduce the potential for windthrow.	Low
						Loss of companion shelter from the tree works identified above.	Crown reduction of trees adjacent to the removed trees to reduce their height by 1/6 <sup>th</sup> of their overall height. Reason: to reduce the potential for windthrow.	Low
						Ivy obscures survey of trees.	Sever ivy at base and remove to 2m using hand tools only and taking care to avoid damage to the bark beneath. Reason: to allow survey.  Resurvey once ivy is cleared from the base of the trees.  Maintain lower stem clear of ivy on an annual basis to enable survey.	Moderate

Designation	Reference number	Species	Age class	Physiological condition	Structural condition	Condition notes	Condition related tree works	Priority
						Low branches over the footway.	Crown lift to 4m over the footway.	Low
							Limit public access to woodland area through post and rail fence.	Low
						Due to the impact upon the visual amenity, condition of the remaining trees and long-term liability for management, alternative options for management may be appropriate.	Remove the mature trees (effectively those over 30cm diameter at 1.3m height) from the woodland strip and plant a new woodland to be managed as it develops.	Low
All stem wood to be removed from site to remove fire risk.								
All branch wood arisings to be chipped and spread over wide area within woodland <b>avoiding damage to trees.</b>								

## General notes

The tree survey has been carried out in relation to the landowner's duty under the Occupier's Liability Act 1984 and common law. The tree survey was carried out from ground level, identifying significant tree features that may have significant bearing upon the condition and management of the tree and giving appropriate recommendations and priorities. All dimensions are estimated. No soil investigations will be carried out.

To carry out the tree survey reasonable access around the base of the tree is required. Where this is not feasible, these parts of the tree may not be able to be inspected. If view of the entire structure of the tree(s) is limited, for instance by the properties in private ownership, this is a limitation to the tree survey and some parts of the tree may not be able to be fully surveyed. The tree survey will be carried out from the ground with the aid of binoculars if necessary. The tree will not be climbed as part of this survey.

Typical significant defects that are to be identified can be referred to in "Hazards from Trees, a general guide" by David Lonsdale and "The body language of trees" by Claus Mattheck published by the Forestry Commission and the Department of the Environment respectively.

The tree survey can only be an assessment of the tree at the time of the survey and the tree(s) should be re-surveyed on a regular basis. An appropriate time period between surveys may be up to 5 years depending upon the condition of the trees, their maturity and the target(s). Recommendations for the period between surveys will be given.

As trees are dynamic structures their condition and health may change in a short period of time, particularly in relation to changes in their immediate environment and circumstances. Therefore, the survey is an assessment of the trees at the time of the survey only. If there is a significant change in the immediate environment and circumstances, then this should be brought to the attention of the Arboriculturalist so that they may advise accordingly.

I have not checked whether the site is within a Conservation Area or whether the trees are under Tree Preservation Order (TPO). Prior to any tree works confirmation of whether these legal restrictions apply to the site or trees ought to be sought from the Local Planning Authority (LPA). If the trees stand within a Conservation Area designated under the Town and Country Planning Act the LPA will normally require 6 weeks notice of intention to carry out any tree works as detailed in the survey. If the trees are under TPO then the LPA will normally require an application for any tree works. Some tree works are exempt, for instance if the trees are dead or dangerous, and certain works can be carried out without application. It is necessary to give the LPA at least five days notice prior to carrying out any of these tree works under these exemptions. This survey, with recommendations, can be used to support any such application or notice.

Wildlife issues are of significant concern to the general public. A balance has to be found between the protection of wildlife and the need for safety when managing trees. The Wildlife and Countryside Act (1980) and Countryside Rights of Way Act (2000) give statutory protection to wild birds, bats, mammals, some invertebrates and plants. It is important to ensure that this legislation is properly considered when carrying out any works to trees.

Bird nests were not identified whilst on site. However, any Arborist carrying out the tree works should ensure that there is no disturbance to nesting birds prior to the works being carried out. Further guidance upon the appropriate timing of the works can be sought from DEFRA, if necessary. Where nesting birds are found, further information should be sought from DEFRA 08459 33 55 77 or [helpline@defra.gsi.gov.uk](mailto:helpline@defra.gsi.gov.uk). Prior to any works being implemented the tree contractor must identify whether there are any bats or birds using the tree as roost or nest. If such habitation is identified, then the tree contractor must obtain the necessary licence from Natural England (0845 601 4523 [www.naturalengland.org.uk](http://www.naturalengland.org.uk)) to carry out the works.

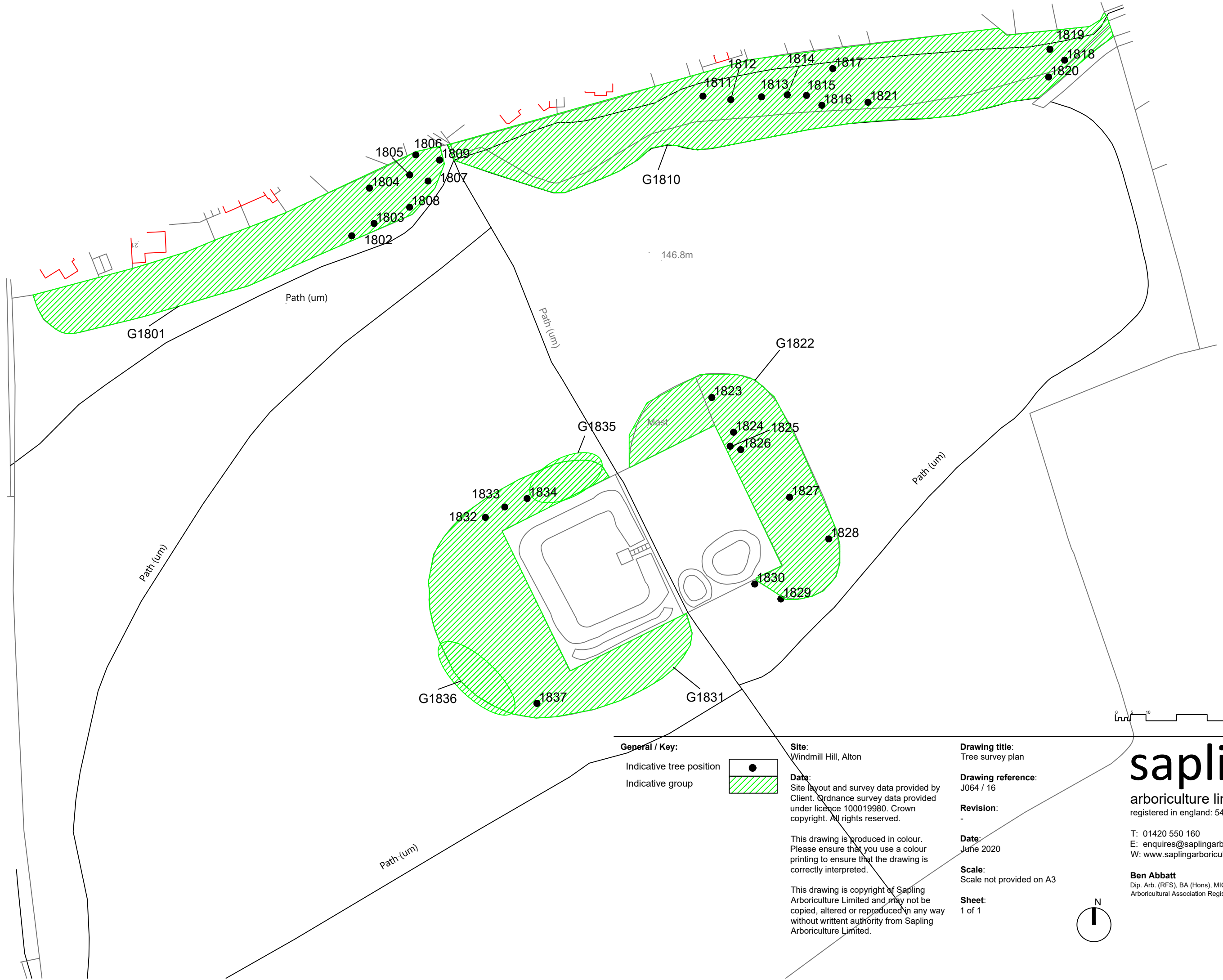
A bat survey prior to tree works is not recommended, except where there is a high potential for habitat. During the tree works, the contractor should carry out the tree works with bats as an active consideration and follow the current industry best practice, e.g. Arboricultural Association Guidance Note 1 Bats in the context of tree work operations 2011, BS8596 Micro guide to surveying for bats in trees and woodland <https://shop.bsigroup.com/upload/273444/BSI-Bat-Microguide-UK-EN.pdf> which a competent tree contractor should be familiar with.

Biosecurity measures: To minimise the potential for contamination of the tree from other tree works it is appropriate to sterilise tools to be used before and after the works are implemented. Appropriate disinfectant includes Propellor or Cleankill Sanitizing spray. Loose debris is to be brushed off prior to treating with disinfectant to ensure appropriate application. See [http://www.forestry.gov.uk/pdf/FCMS028-guidance.pdf/\\$file/FCMS028-guidance.pdf](http://www.forestry.gov.uk/pdf/FCMS028-guidance.pdf/$file/FCMS028-guidance.pdf) for further information on Biosecurity and <http://www.forestry.gov.uk/forestry/infd-9fjd2d> for disinfectant information.

## Key to condition survey sheet

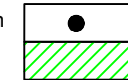
<b>No</b>	Tree number.
<b>Species</b>	Species of tree.
<b>Age Class (Age)</b>	<b>Young</b> A tree considered to be less than approximately 20 years old.
	<b>Middle aged</b> A tree in approximately the first 1/5th of its normal life span with apical dominance (rapidly growing with a clear main leader) and not yet fully at its environmental potential full height.
	<b>Mature</b> A tree in its 2/5ths to 5/5ths of its normal life span with apical dominance lost and at its environmental potential full height.
<b>Condition</b> (Physiological and Structural)	<b>Good</b> Full healthy canopy; but possibly including some suppressed branches or minor physical damage. A tree that requires little or no tree works and it is anticipated to be retained for over 20 years.
	<b>Fair</b> Slightly reduced leaf cover, minor dead wood, or isolated major deadwood. A tree that requires tree works to remove defects and/or improve the form so that it may be anticipated to be retained for over 5 years.
	<b>Poor</b> Overall sparse leafing or extensive dead wood. A tree that has a significant proportion of defects and/or requires considerable tree works to aid its retention and/or where the retention of the tree is not anticipated beyond 5 years.
	<b>Very poor</b> Large areas of crown dead. A tree that has a significant proportion of defects and/or requires considerable tree works to aid its retention.
<b>Recommendations</b>	As per BS3998: 2010 Recommendations for Tree Works.
<b>Priority</b>	<b>Immediate</b> Works should be carried out immediately as the probability of harm or damage occurring is likely.
	<b>High</b> These works are important to carry out as soon as reasonably possible and any budget available for tree management should be spent upon these trees before the moderate and low categories. Works in this category usually will relate to abatement of risk for harm and or damage to occur. Ideally works in this category are anticipated to be carried out within 1 month.
	<b>Moderate</b> These works are important to carry out as soon as reasonably possible and any budget available for tree management should be spent upon these trees before the low categories. Works in this category usually will relate to abatement of risk for harm and or damage to occur and for the good arboricultural management of the trees. Ideally works in this category are anticipated to be carried out within 3 months.
	<b>Low</b> Works in this category usually will relate to the good arboricultural management of the trees. Ideally works in this category are anticipated to be carried out within 12 months.
<b>Re-survey</b>	This is the time period in which it is recommended that the tree is surveyed again. This is based upon the condition of the tree, its location, previous, current and future management. It is normally expressed at a time period from the date of the report / survey, whichever is the sooner. If no time period is noted, then the default period is one year.

## Site plan



**General / Key:**

- Indicative tree position
- Indicative group



**Site:**  
Windmill Hill, Alton

**Data:**  
Site layout and survey data provided by Client. Ordnance survey data provided under licence 100019980. Crown copyright. All rights reserved.

This drawing is produced in colour. Please ensure that you use a colour printing to ensure that the drawing is correctly interpreted.

This drawing is copyright of Sapling Arboriculture Limited and may not be copied, altered or reproduced in any way without written authority from Sapling Arboriculture Limited.

**Drawing title:**  
Tree survey plan

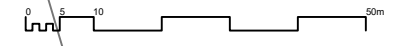
**Drawing reference:**  
J064 / 16

**Revision:**  
-

**Date:**  
June 2020

**Scale:**  
Scale not provided on A3

**Sheet:**  
1 of 1

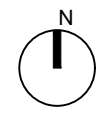


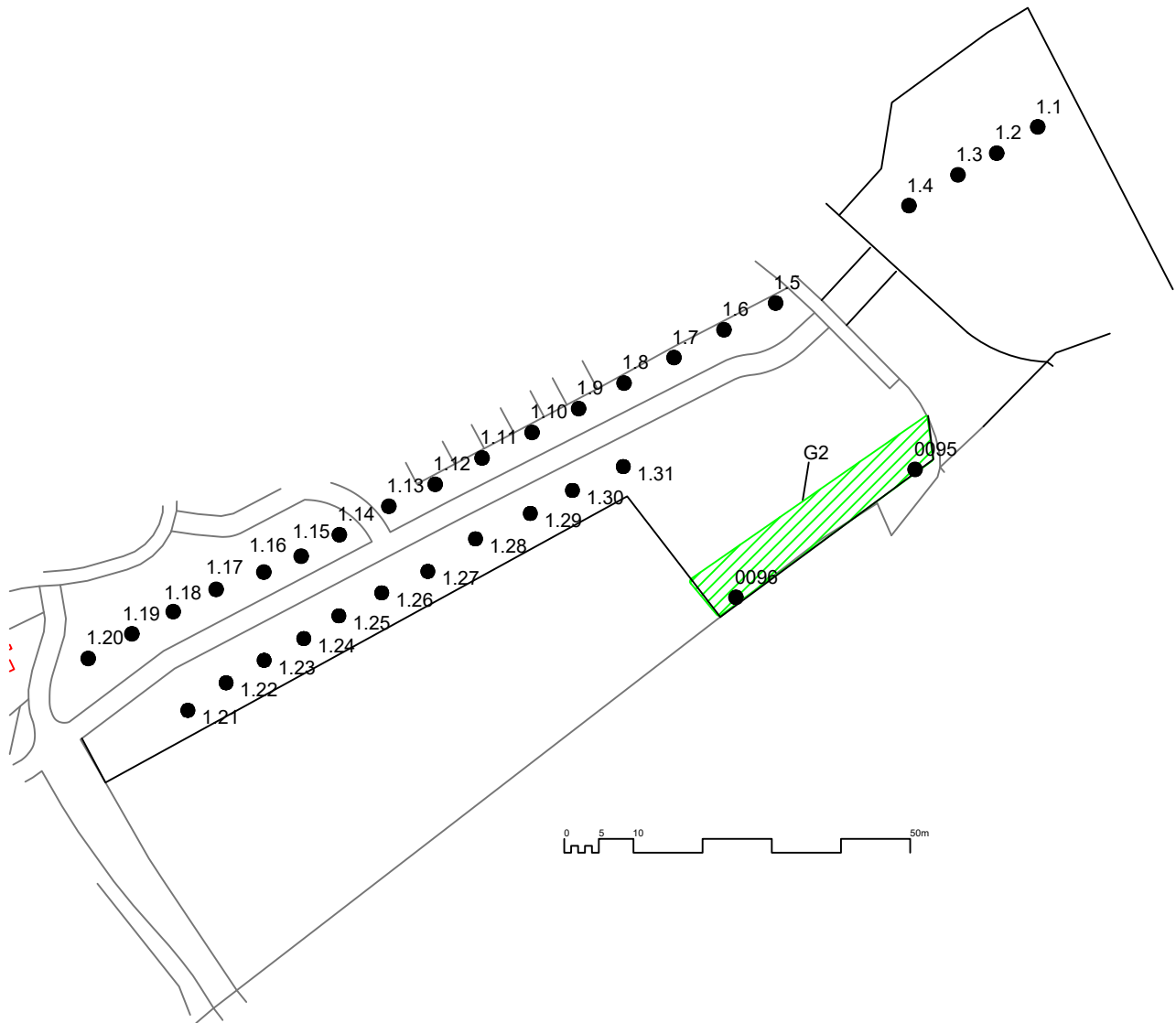
# sapling

arboriculture limited  
registered in england: 5414238

T: 01420 550 160  
E: enquires@saplingarboriculture.com  
W: www.saplingarboriculture.com

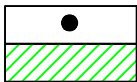
**Ben Abbatt**  
Dip. Arb. (RFS), BA (Hons), MICFor, MRICS, CEnv  
Arboricultural Association Registered Consultant





**General / Key:**

indicative tree position  
indicative group position



**Site:**  
land at Chawton Park Rd / Treloars.

**Data:**  
Site layout and survey data provided by Client. Ordnance survey data provided under licence 100019980. Crown copyright. All rights reserved.

This drawing is produced in colour. Please ensure that you use a colour printing to ensure that the drawing is correctly interpreted.

This drawing is copyright of Sapling Arboriculture Limited and may not be copied, altered or reproduced in any way without written authority from Sapling Arboriculture Limited.

**Drawing title:**  
Tree survey plan

**Drawing reference:**  
J064 / 16

**Revision:**  
-

**Date:**  
June 2020

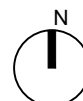
**Scale:**  
Scale not provided on A4

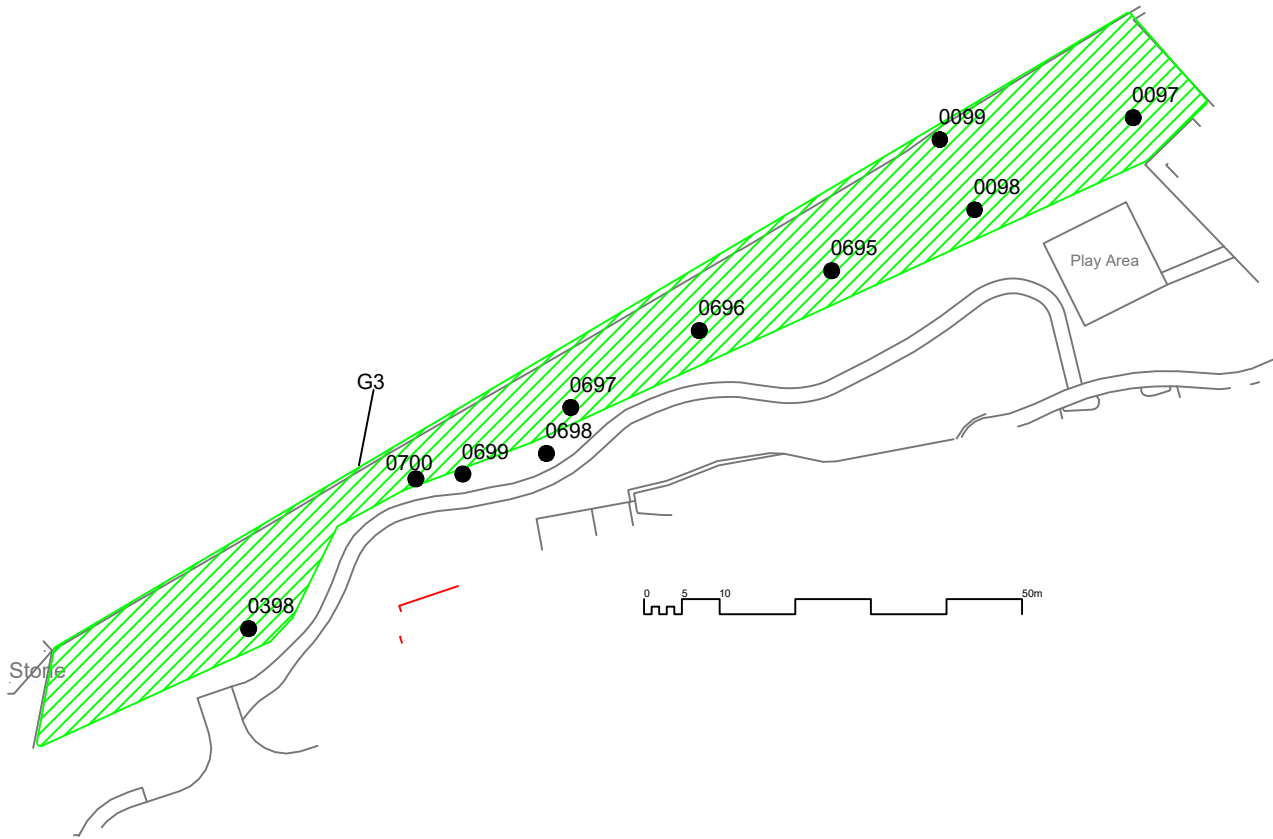
**Sheet:**  
1 of 1

**sapling**  
arboriculture limited  
registered in england: 5414238

T: 01420 550 160  
E: enquires@saplingarboriculture.com  
W: www.saplingarboriculture.com

**Ben Abbatt**  
Dip. Arb. (RFS), BA (Hons), MICFor, MRICS, CEnv  
Arboricultural Association Registered Consultant

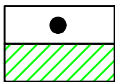




**General / Key:**

Indicative tree position

Indicative group position



**Site:**  
land off Chawton Park Road / Treloars.

**Data:**  
Site layout and survey data provided by Client. Ordnance survey data provided under licence 100019980. Crown copyright. All rights reserved.

This drawing is produced in colour. Please ensure that you use a colour printing to ensure that the drawing is correctly interpreted.

This drawing is copyright of Sapling Arboriculture Limited and may not be copied, altered or reproduced in any way without written authority from Sapling Arboriculture Limited.

**Drawing title:**  
Tree survey plan

**Drawing reference:**  
J064 / 16

**Revision:**  
-

**Date:**  
June 2020

**Scale:**  
Scale not provided on A4

**Sheet:**  
1 of 1

# sapling

arboriculture limited  
registered in england: 5414238

T: 01420 550 160  
E: enquires@saplingarboriculture.com  
W: www.saplingarboriculture.com

**Ben Abbatt**  
Dip. Arb. (RFS), BA (Hons), MICFor, MRICS, CEnv  
Arboricultural Association Registered Consultant







© 2020

This document was written by, belongs to and is copyright to Sapling Arboriculture Limited. It contains valuable Sapling Arboriculture Limited proprietary and confidential information which is disclosed only for the purposes of the client's assessment and evaluation of the project which is the subject of this report. The contents of this document shall not, in whole or in part (i) be used for any other purposes except such assessment and evaluation of the project; (ii) be relied upon in any way by the person other than the client (iii) be disclosed to any member of the client's organisation who is not required to know such information nor to any third party individual or organisation, or (iv) be copied or stored in any retrieval system nor otherwise be reproduced or transmitted in any form by photocopying or any optical, electronic, mechanical or other means, without prior written consent of the Company Secretary Director, Sapling Arboriculture Limited, to whom all requests should be sent. Accordingly, no responsibility or liability is accepted by Sapling Arboriculture Limited towards any other person in respect of the use of this document or reliance on the information contained within it, except as may be designated by law for any matter outside the scope of this document.